




MAP LEGEND




 PROPOSED GAS EXPLORATION WELLS

 SURFACE WATER MONITORING STATION
 WATER WELLS WITH SEO PERMIT NUMBER

 1 MILE RADIUS
 CROSS SECTION LINE



 0 2000 Feet
 1" = 2000'

DATE: 0-2021-0829 UNLESS OTHERWISE SPECIFIED TO PO. APR

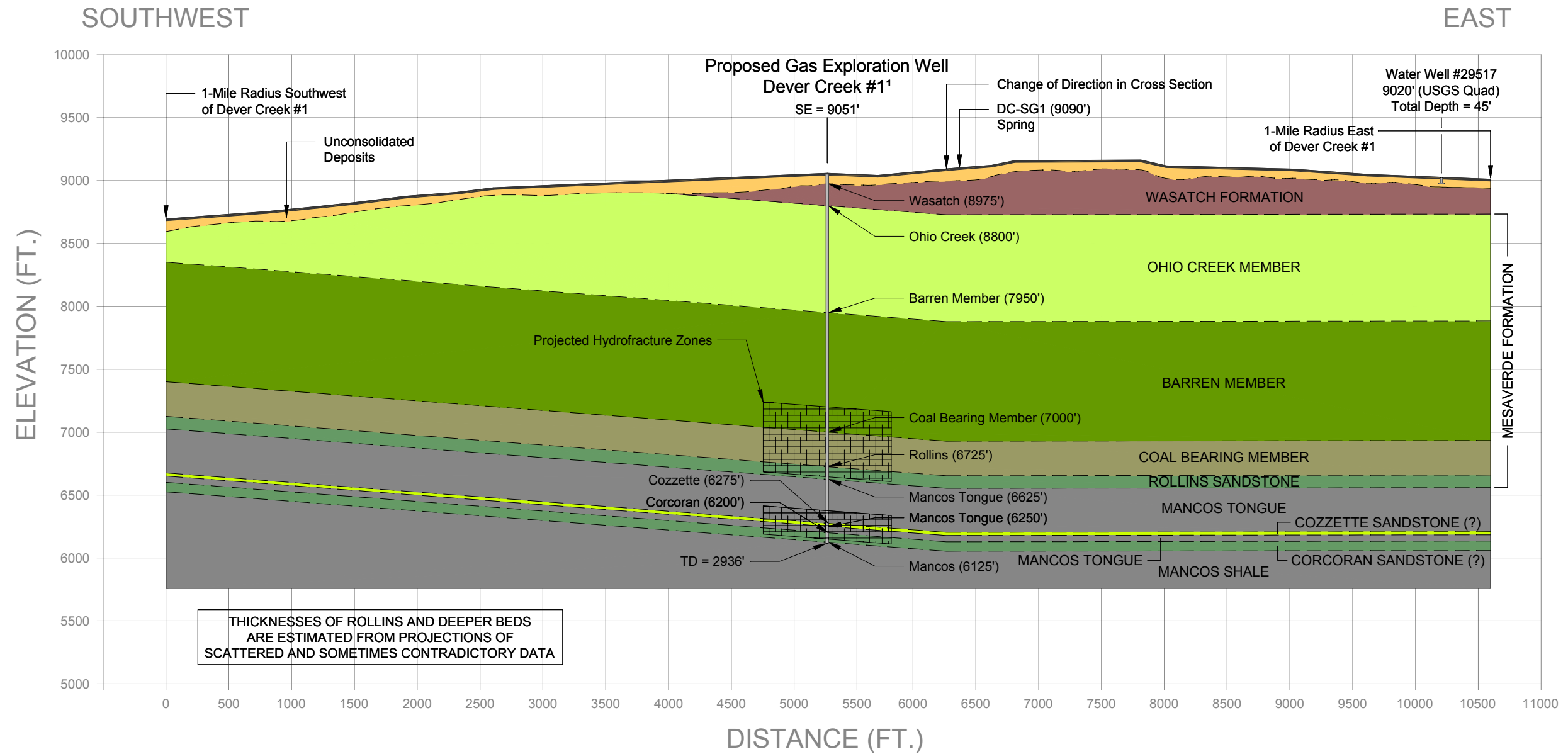


WRIGHT WATER ENGINEERS, INC.
 2490 W 26TH AVE. 100A
 DENVER, CO. 80211
 (303) 480-1700

**DEVER CREEK #1
GAS EXPLORATION WELL**

**FIGURE
3A**

3/31/03: C:\ACAD-DWG\021-082\ORIGINAL\SECTION\SECTIONS 3-032.DWG



¹ Surface Elevation (SE) provided by Gunnison Energy Corporation.
 Stratigraphic cross sections based on geologic maps by Ellis and others, 1987; Ellis and Freeman, 1984; USGS Maps C-97A and C-109.
 Estimated thickness of the Corcoran sandstone based on Morrell No.1 well located in Section 12, Township 13 South, Range 92 West.

WWE WRIGHT WATER ENGINEERS, INC.
 2490 W. 26TH AVE. SUITE 100A
 DENVER, CO 80211
 (303)480-1700

DESIGN	RP
DETAIL	KAL
CHECK	JWR
DATE	03/31/03
SCALE	SEE ABOVE

**GEOLOGIC CROSS SECTION SCHEMATIC THROUGH
 DEVER CREEK #1**

PROJECT NO.	FIGURE
021-082.000	3B